

## Administration Guide

# Freedom60 Pump<sup>®</sup>

---

## Preparation

Please refer to your SASH Teaching Mat for more details.

1. **Clean** your work area.
2. **Wash** your hands.
3. **Gather** your supplies:
  - Freedom60 pump
  - 50 mL luer lock syringe
  - Mini-spike dispensing pin
  - Subcutaneous (SC) needle set (package contains small transparent dressing)
  - Administration flow rate tubing (controls infusion rate)
  - Alcohol pads
  - Gauze/adhesive bandages
  - Sharps container
4. **Inspect** the medication and label:
  - Correct patient name
  - Correct medication and dose
  - Medication is not expired
  - Length of infusion
  - The solution should be clear, consistent in color and free of any visible particles

## Prepare medication

1. Remove the protective cap from the vial.
2. Clean the top of the vial with an alcohol pad.

3. Remove the clear cover from the mini-spike dispensing pin. Insert the spike into the vial of medication.



4. Remove the blue cap from the mini-spike dispensing pin. Attach the mini-spike dispensing pin to the 50 mL luer lock syringe. **Do not insert air into the vial.**
5. Invert the vial (turn upside down). Withdraw the medication into the 60 mL syringe.
6. Repeat these steps to draw up each vial of medication until you reach the total dose your doctor ordered.

7. Remove the mini-spike from the syringe. Discard the mini-spike into a sharps container.

**Note:** If you have multiple vials of medication to draw up, use the same dispensing pin and syringe to draw up all vials of medication. A backup mini-spike dispensing pin has been provided in case of contamination or if the spike becomes dull. If you use the backup mini-spike dispensing pin, let your Coram<sup>®\*</sup> nurse know so it can be replaced.

### Prime your tubing

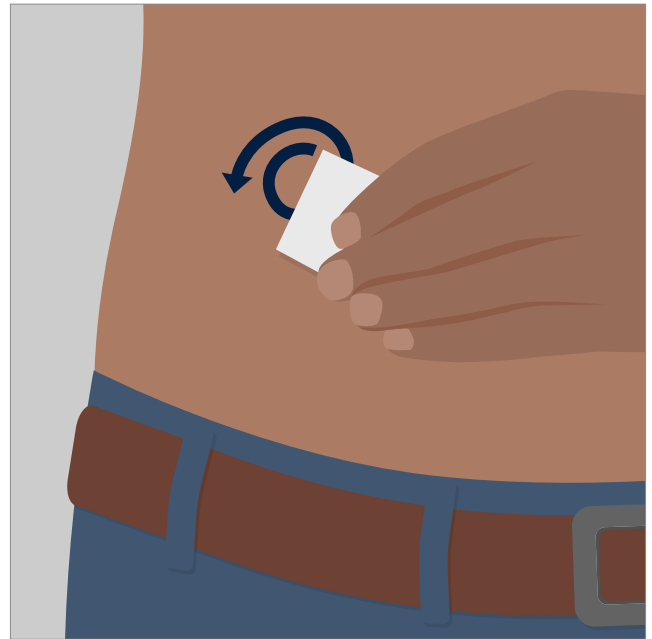
1. Connect the syringe of medication to the end of the flow rate tubing. Twist on clockwise until secure.
2. Attach the SC needle set to the other end of the flow rate tubing.
3. Gently push on the syringe plunger to fill the tubing with medication.

**Note:** To help minimize site reactions, prime the medication all the way to the end of the tubing, but **not into** the SC needle(s).

### Prepare injection site(s)

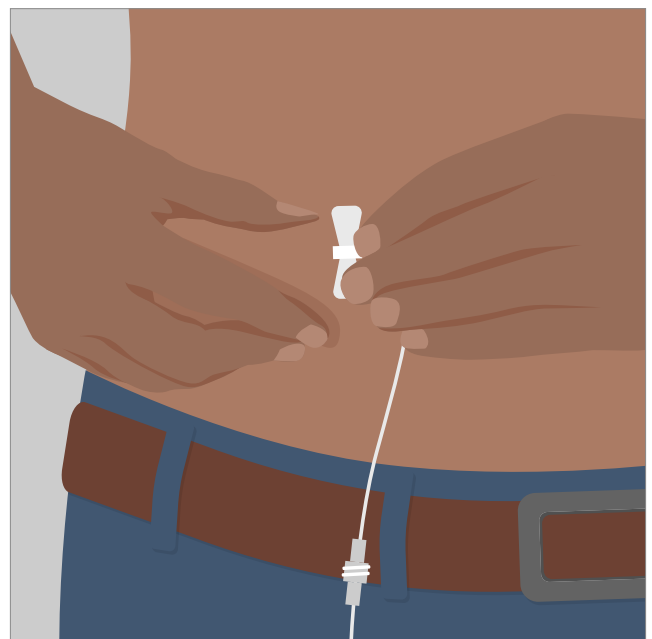
1. Select your injection site. Choose an area on your abdomen, thigh, upper arm or outside of upper leg/hip for the infusion. Use a different site from the last time you infused. Never infuse into areas where the skin is tender, bruised or hard. Avoid infusing into scars or stretch marks.
2. If you are using more than one injection site, be sure each site is at least two inches apart.

3. Use an alcohol pad to clean each site prior to inserting the SC needle(s). Clean each site starting at the center and working outward in a circular motion. Allow each site to air dry before proceeding.



### Insert the SC needle(s)

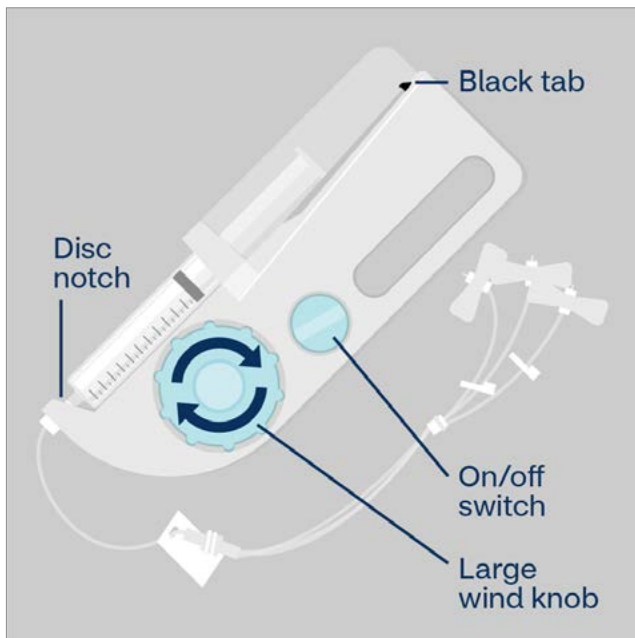
1. With two fingers, pinch the skin together around the injection site. Insert the needle into the skin at a 90 degree angle.



2. Put a clear dressing over the injection site. Be sure to cover all needle sites. This will help prevent infection and keep the needle(s) from coming out.

### Load the syringe into the pump

1. Make sure the pump is in the “off” position.
2. Check that the black tab in the syringe case is all the way back before you place the syringe in the pump.
3. Turn the wind-up knob in a clockwise direction. This helps move the black tab to the end of the syringe case.
4. Insert the syringe into the pump with the numbers facing up. Make sure the luer disc on the syringe sits securely in the disc notch on the “nose” of the pump. The disc notch is on the opposite end of the black notch.



### Start the infusion

1. Open all clamps.
2. Turn the pump to the “on” position to start the infusion.
3. The black tab will move until it reaches the end of the syringe plunger and will lock into place. The infusion will begin automatically after this happens.

### Stop the infusion

1. When the syringe is empty, turn the switch to the “off” position.
2. Turn the large knob clockwise to move the black tab away from the syringe.
3. Remove the syringe from the pump.

**Note:** If using multiple syringes, disconnect the empty syringe from the flow rate tubing. Attach the new syringe filled with medication and repeat the steps above to load the syringe into the pump.

4. Remove the dressing(s) and needle(s). Discard the needle(s) in a sharps container.
5. Apply a bandage to the site(s) if needed.

### Injection site reactions

The most common side effects of subcutaneous immunoglobulin (SCIg) therapy are reactions that can occur around your injection site. These site reactions can be tender and range in size from a dime to larger than a half dollar.

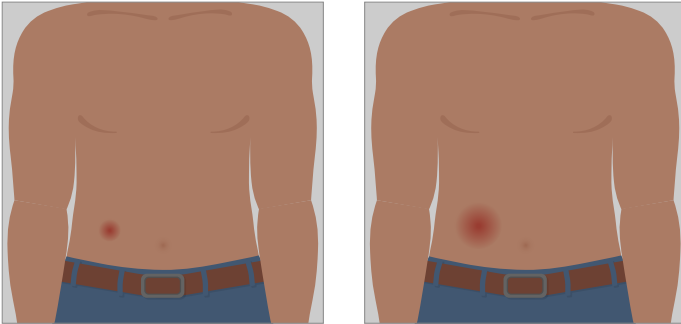
You may experience mild to moderate injection site reactions. Most reactions improve within 24 to 48 hours after your infusion. You're also less likely to have injection site reactions as you continue SCIg therapy.

## Mild injection site reaction

This is normal after a SCIg infusion. You may notice swelling the size of a **dime or quarter**. Others symptoms include mild redness, itching and/or discomfort.

## Moderate injection site reaction

This is normal after a SCIg infusion. You may notice swelling the size of a **half dollar, plum, peach or grapefruit**. Other symptoms include moderate redness, itching and/or discomfort.



*The difference between a mild or moderate reaction is the size of swelling and the level of redness at the injection site.*

If your injection site reaction doesn't improve within 24 to 48 hours, contact your nurse.

### Want to learn more?

Find other helpful information on our Resource Center at [CoramHC.com](https://www.coramhc.com).

\*Coram CVS Specialty® Infusion Services

SASH (SASH=S: Saline; A: Administration of Medication; S: Saline; H: Heparin).

This information is not a substitute for medical advice or treatment. Talk to your doctor or health care provider about this information and any health related questions you have. Coram assumes no liability whatsoever for the information provided or for any diagnosis or treatment made as a result of this information.

This document contains references to brand-name medical products that are trademarks or registered trademarks of companies not affiliated with CVS Specialty.

Your privacy is important to us. Our employees are trained regarding the appropriate way to handle your private health information.

©2020 Coram LLC. All rights reserved. 75-53545A 121820